

LRK(HC) 红光测试坐标原点(虚拟焦点坐标 $x=0.1711\text{mm}$, $y=0.0004\text{mm}$, $z=-0.0850\text{mm}$)

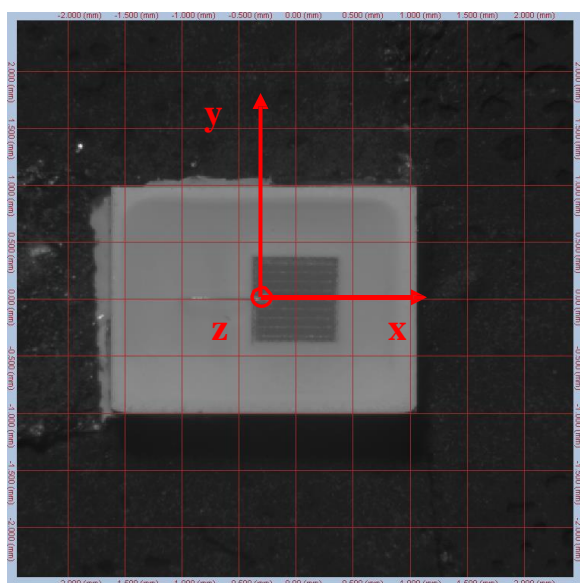


图 1 $I=0^\circ$, $A=0^\circ$

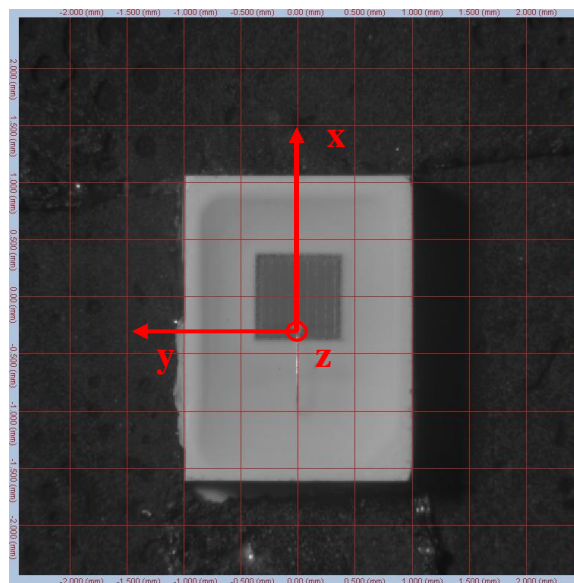


图 2 $I=0^\circ$, $A=90^\circ$

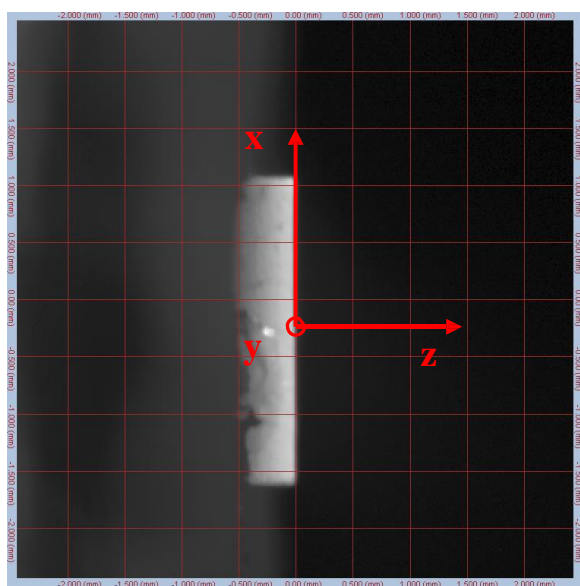


图 3 $I=90^\circ$, $A=90^\circ$

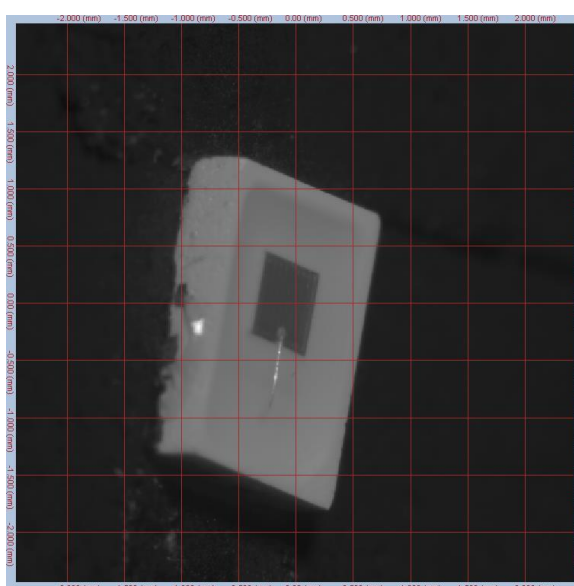


图 4 $I=50^\circ$, $A=75^\circ$